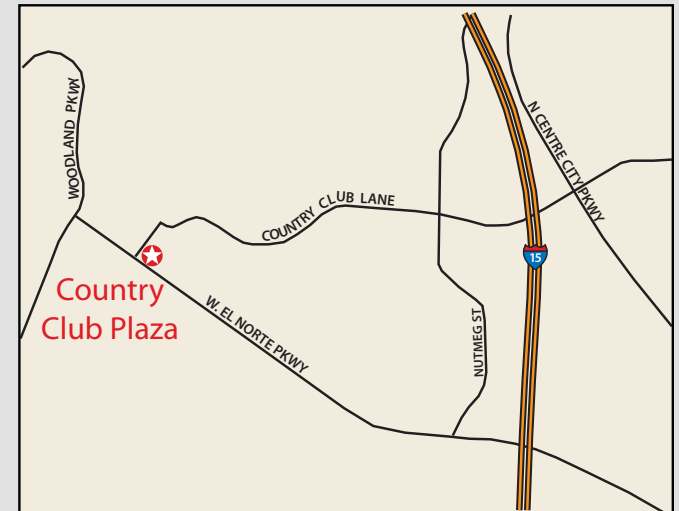


FOR LEASE

Country Club Plaza | 1870-1896 W. El Norte Parkway, Escondido CA



PROPERTY FEATURES

- Available suites range from 1,250 - 2,000 SF
 - Suite 1874 - Previously a hair salon
 - Suite 1876 - Open; Previously a Karate Studio
- Busy community retail/office center
- Excellent visibility - Country Club Lane & W. El Norte Parkway
- Street signage available
- Ample parking: 4:1,000 SF
- Quick access to HWY 78 & Interstate 15

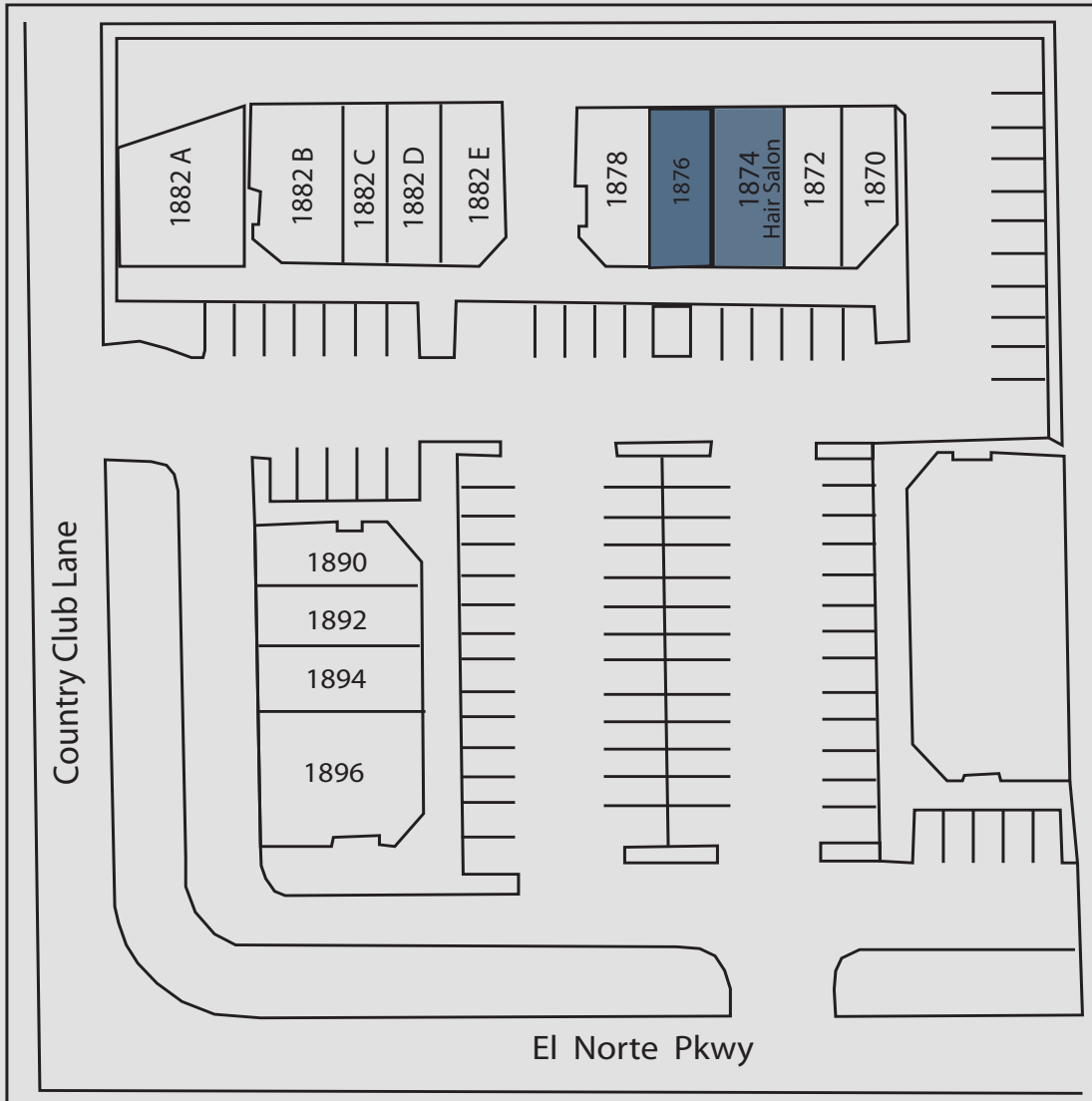
Lee & Associates-North San Diego County
5872 Owens Avenue | Suite 200 | Carlsbad, CA
p. 760.929.9700 | f. 760.929.9977 | www.lee-associates.com

Lee & Associates
COMMERCIAL REAL ESTATE SERVICES

RICK MARCUS, CCIM
760.448.2448
rmarcus@lee-associates.com
License ID#816072

FOR LEASE

Country Club Plaza | 1870-1896 W. El Norte Parkway, Escondido CA



Space	Tenant
1860-1868	7-11
1870	Barrett Weller Dentistry
1872	Cleaners
1874	AVAILABLE - Approx. 1,250 SF (Hair Salon)
1876	AVAILABLE - 1,000 SF
1878	Country Club Chiropractor & Wellness
1882A	Giles Real Estate
1882B & 1882C	Professional Office Suites
1882 D	National Tax Service
1882E	Blue Mug Cafe
1890	Borrelli's Italian Take-Out
1892	Bewell's
1894	Digi Dog
1896	Kenote Grill Mexican Restaurant

Lee & Associates-North San Diego County
 5872 Owens Avenue | Suite 200 | Carlsbad, CA
 p. 760.929.9700 | f. 760.929.9977 | www.lee-associates.com



RICK MARCUS, CCIM
 760.448.2448
 rmarcus@lee-associates.com
 License ID#816072

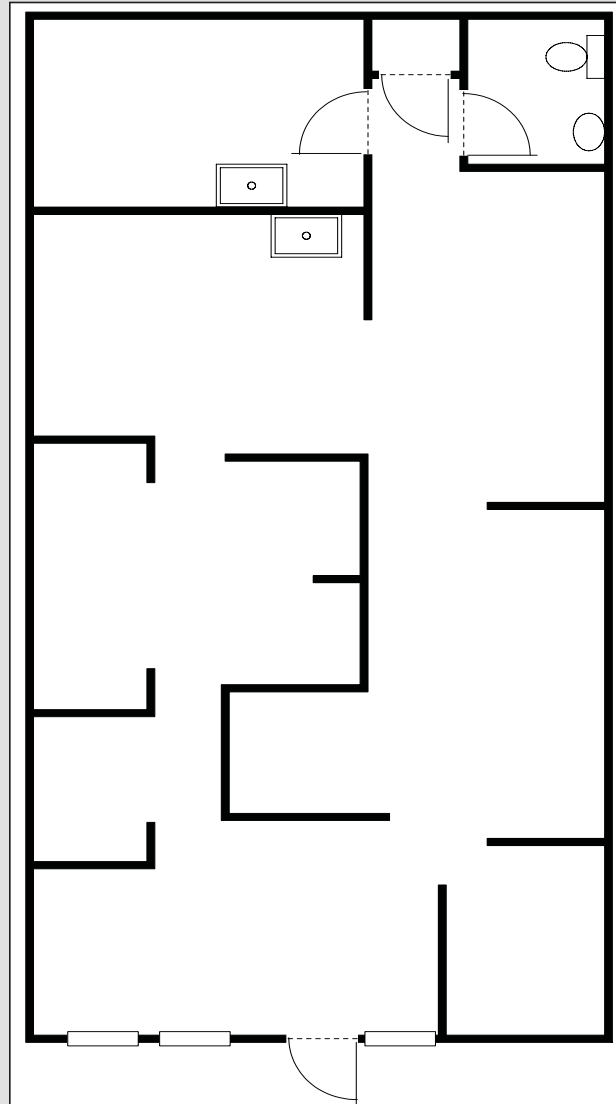
FOR LEASE

Country Club Plaza | 1870-1896 W. El Norte Parkway, Escondido CA

Suite 1874

- Built out as hair salon
- Approx. 1,250 SF
- Office, open work area, restroom

Lease Rate: Negotiable



Lee & Associates-North San Diego County
5872 Owens Avenue | Suite 200 | Carlsbad, CA
p. 760.929.9700 | f. 760.929.9977 | www.lee-associates.com



RICK MARCUS, CCIM
760.448.2448
rmarcus@lee-associates.com
License ID#816072